



# CANDLEWOOD SUITES

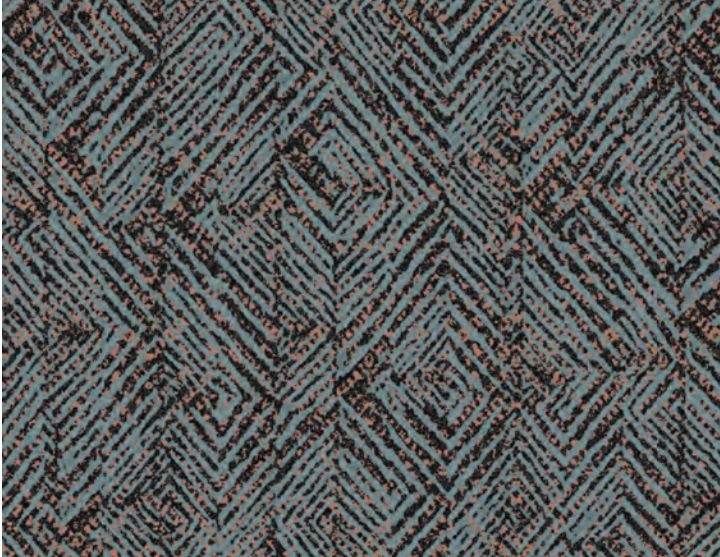
Approved Beacon 4.0 Flooring





# PUBLIC SPACE

## LOBBY AREA RUG



IHG Spec: CPT-11 - E1664-L1  
Construction: Colorpoint  
Rug Size: 15' W x 9' L or 12'6" W x 7'6" L  
Weight: 36 oz (12 SPI)  
Backing: Loose-Lay: Non-Slip  
Reno: CPT-50 Inset - Actionbac ®

## BOH OFFICES



IHG Spec: CPT-13 - 446-ED  
Construction: Infinity  
Repeat Size: 12" W x 12" L Broadloom  
Weight: 32 oz (12 SPI)  
Backing: Actionbac ®



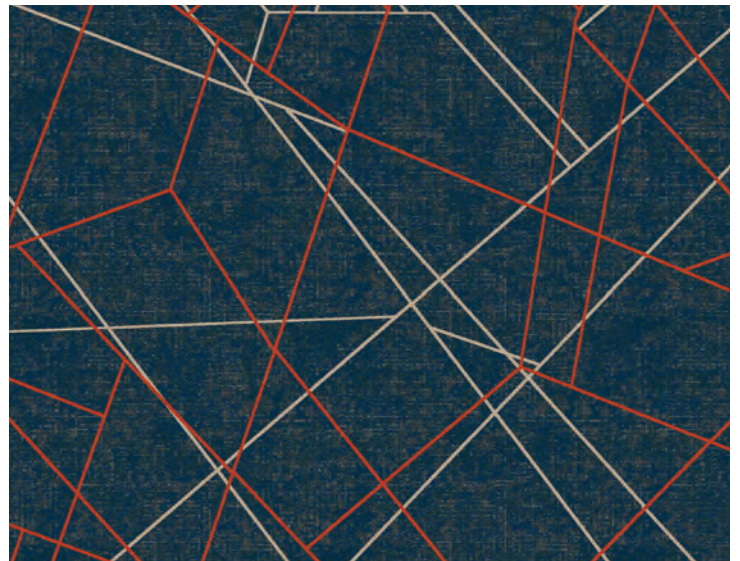




## CORRIDOR CARPET BASE

IHG Spec: B12 - SCB30 - 6208  
Construction: Infinity  
Size: 4" H or 6" H  
Weight: 30 oz (12 SPI)  
Backing: Actionbac ®

## CORRIDOR & ELEVATOR LOBBY



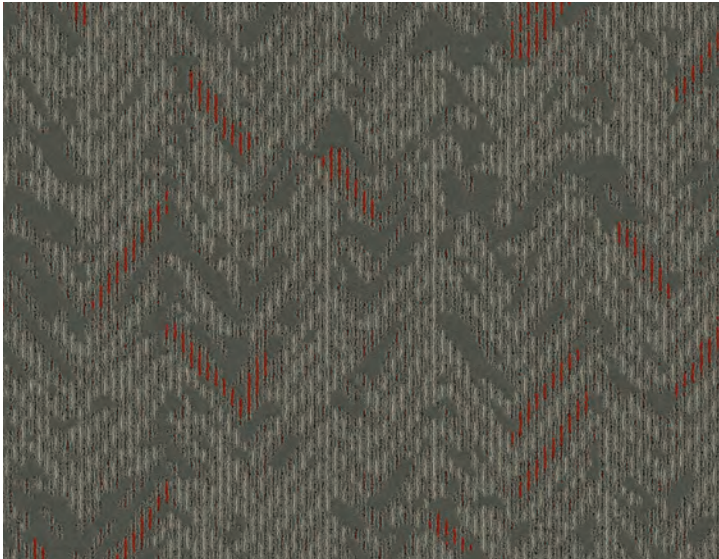
IHG Spec: Corridor CPT-12 - E1664-K1 or  
Elevator Lobby CPT-14 - E1664-K1  
Construction: Dye Injection  
Repeat Size: 7'6" W x 9'3.5" L  
Weight: 36 oz (13.5 SPI)  
Backing: P3 Attached Cushion



# GUESTROOMS

Rust

## GUESTROOM BROADLOOM



IHG Spec: CPT-1 - E1664-A4  
Construction: Infinity  
Repeat Size: 36" W x 36" L  
Weight: 32 oz (12 SPI)  
Backing: Actionbac ®

## GUESTROOM ENTRY & KITCHEN



IHG Spec: VF-1 - Ironman 332  
Color: Sawtooth Grey  
Plank Size: 6.3" W x 48"L x 3.0mm H  
Wear Layer: 22 mil (.5588mm)  
Texture: Wood Grain  
Carton Size: 18 pieces (36 sq.ft)





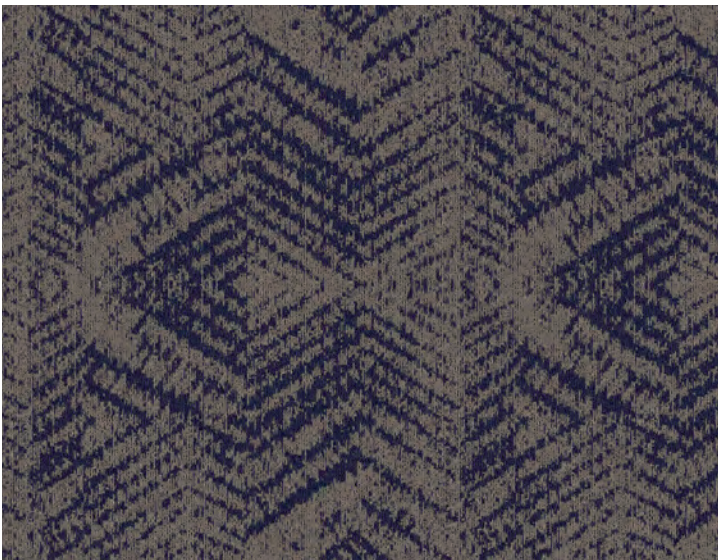
# GUESTROOMS

Slate



**GUESTROOM BROADLOOM**

**GUESTROOM ENTRY & KITCHEN & ELEVATOR CAB**



IHG Spec: CPT-1 - E1664-C4  
 Construction: Infinity  
 Repeat Size: 6' W x 4' L  
 Weight: 32 oz (12 SPI)  
 Backing: Actionbac®

IHG Spec: VF-1 - Telegraph Road  
 Color: 2856  
 Plank Size: 6" W x 48"L x 2.5mm H  
 Wear Layer: 20 mil (.55mm)  
 Texture: Wood Grain  
 Carton Size: 16 pieces (33.89 sq.ft)

# SUNDRIES

---

## ADHESIVES

---

Broadloom: Gold Stix - Premium Multi-Purpose Adhesive  
Installation Method: Direct Glue or Double-Stick  
Size: 4 gallon pail  
Spread Ratio: Direct 32-40 sq yds/pail (1/8" x 18" x 1/16" V-notch)  
Double Stick 20-28 sq yds/pail (1/8" x 18" x 1/16" V-notch)

Seam Sealer: Stix Seam  
Usage: Broadloom installation  
Size: Case of 12 quarts (Approx. 400 LF per quart)

Vinyl Floor - Stix 2230 - Pressure Sensitive  
Installation Method: Direct Glue  
Size: 4 gallon pail  
Spread Ratio: 98-111 sq yds/pail (1/16" x 1/32" x 1/32" U-notch)

## UNDERLAYMENT

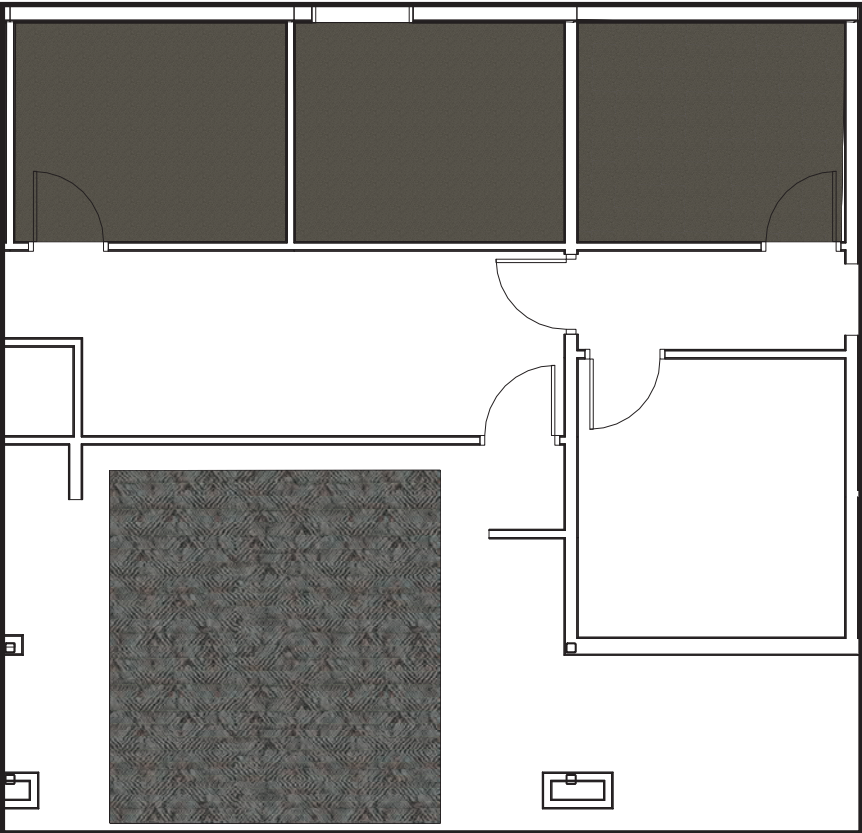
---

Guestrooms:  
CPT - 1.P QWL- 32 oz  
Size: 6' W = 40 sq. yds per roll or 12' W = 80 sq. yds per roll

Public Areas:  
CPT - 13.P 2568 - Treadmore Double Stick Fiber  
CPT - 13.P Urethane Double Stick 6' W = 40 sq.  
Size: yds per roll

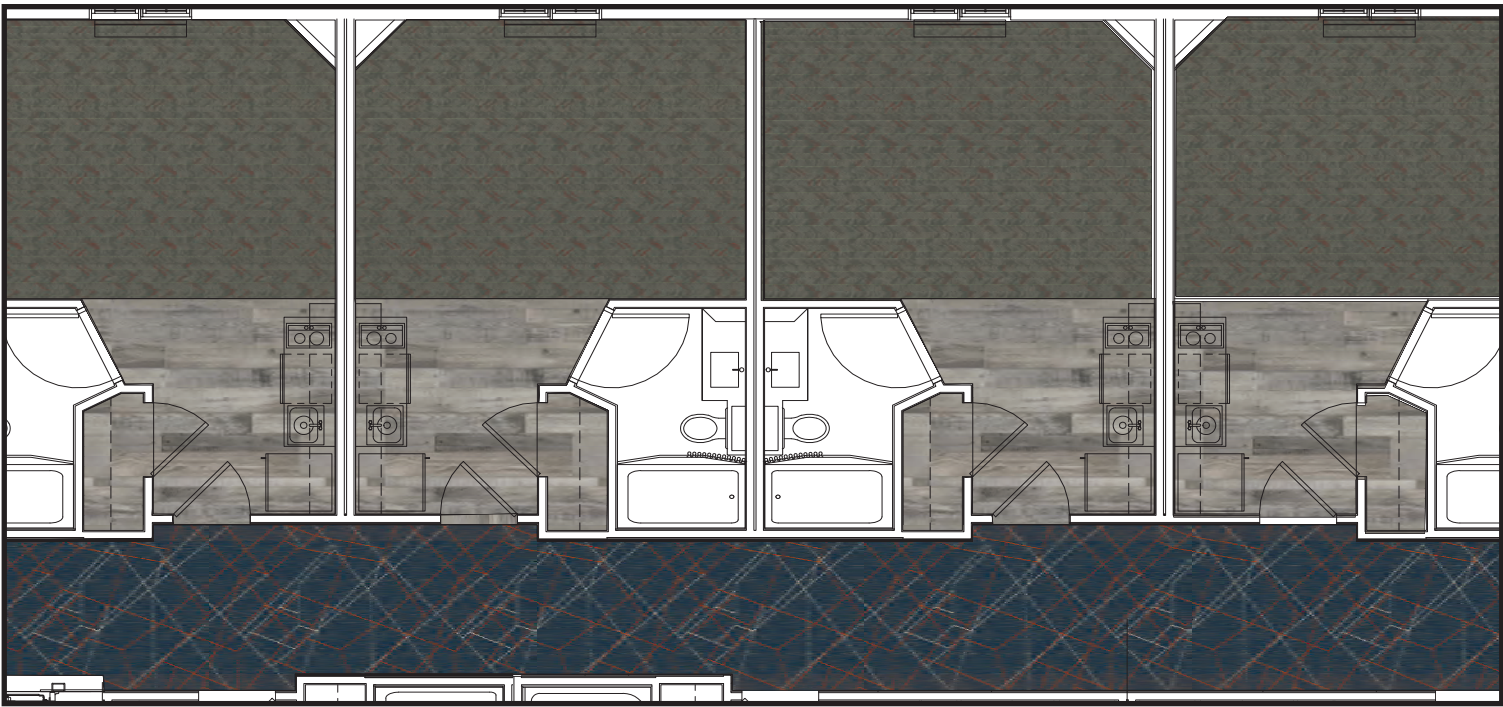


# FLOODED FLOOR PLAN



## FLOODED KEY

- LOBBY RUG: HP-CPT11.1.2
- BOH: CPT-13 - 446-ED
- GUESTROOM: CPT-1 - E1664-A4
- GUEST ENTRY: VF-1 Ironman 332
- CORRIDOR: CPT-12 - E1664-K1



# PUBLIC SPACES

## COLORPOINT - TECHNICAL SPECIFICATION & PERFORMANCE

---

Yarn Content:	Zeftron Nylon 6
Gauge:	1/10th
Width:	15'
Stitch Rate:	12 SPI
Secondary Backing:	Woven Polypropylene
Flame Resistance:	DOC FF-1-70
Static Control:	Less than 3.5 KV
Flooring Radiant Panel:	Class 1 (ASTM 648)
Smoke Density:	Less than .450 (ASTM E622)
Warranty:	10 Year Wear

## DYE INJECTION - TECHNICAL SPECIFICATION & PERFORMANCE

---

Yarn Content:	100% Ultron Type 6.6 Nylon
Gauge:	1/10th
Width:	15'
Stitch Rate:	13 SPI
Secondary Backing:	Woven Polypropylene
Flame Resistance:	ASTM E662
Static Control:	Less than 3.5 KV
Flooring Radiant Panel:	Class 1 (ASTM 648)
Smoke Density:	Less than .450 (ASTM E622)
Warranty:	10 Year Wear

## GUESTROOMS Rust & Slate Scheme

## INFINITY TIP SHEAR - TECHNICAL SPECIFICATION & PERFORMANCE

---

Yarn Content:	SDN 1/10th
Gauge:	12' (up to 15')
Width:	
Stitch Rate:	12-13.5 SPI
Secondary Backing:	Woven Polypropylene
Flame Resistance:	DOC FF-1-70
Static Control:	Less than 3.5 KV
Flooring Radiant Panel:	Class 1 (ASTM 648)
Smoke Density:	Less than .450 (ASTM E622)
Warranty:	10 Year Wear

## LUXURY VINYL TILE - TECHNICAL SPECIFICATION & PERFORMANCE

---

Finish:	UV Cured Polyurethane
Water Resistant:	100%
Characteristics:	Anti Microbial, Anti Scratch, Anti Slip
Optional Underlayment:	Silent Guard