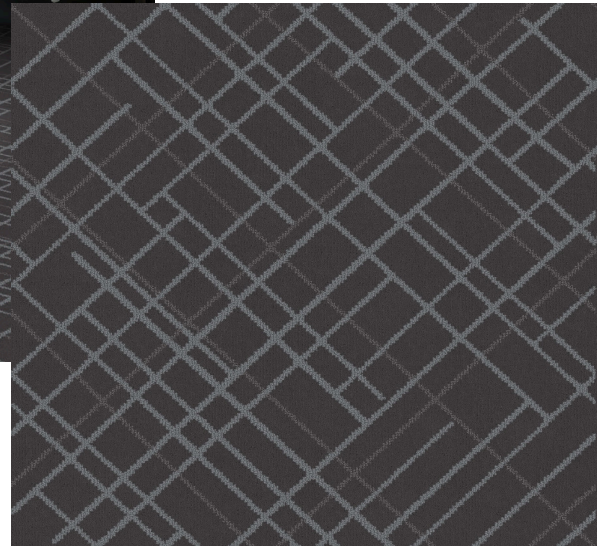




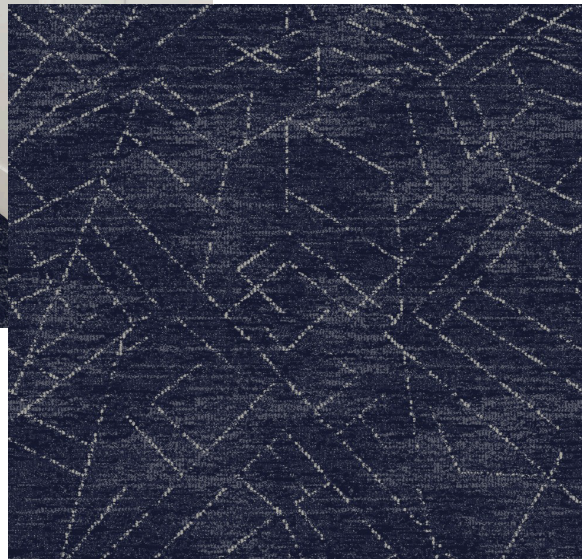
Comfort® Rise & Shine™ & Shine™





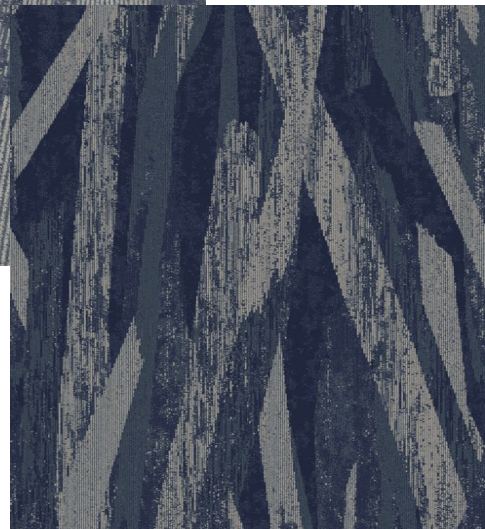
City RS01

Construction: Infinity Tip Shear
Yarn Content: Zeftron Nylon
Dye Method: Solution Dyed
Gauge: 1/10th
Width: 12'
Yarn Weight Tufted: 32 oz.
Stitch Rate: 12 SPI
Primary Backing: Woven Polypropylene
Secondary Backing: ActionBac®
Pile Height: .280"
Total Thickness: .450"
Pattern Repeat: 36" X 36"



City RS01-2 Corridor

Construction: Infinity Tip Shear
Yarn Content: Zeftron Nylon
Dye Method: Solution Dyed
Gauge: 1/10th
Width: 12'
Yarn Weight Tufted: 36 oz.
Stitch Rate: 13.5 SPI
Primary Backing: Woven Polypropylene
Secondary Backing: ActionBac®
Pile Height: .280"
Total Thickness: .450"
Pattern Repeat: 36" X 36"



City RS01-3 Lobby

Construction: Infinity Tip Shear
Yarn Content: Zeftron Nylon
Dye Method: Solution Dyed
Gauge: 1/10th
Width: 12'
Yarn Weight Tufted: 36 oz.
Stitch Rate: 13.5 SPI
Primary Backing: Woven Polypropylene
Secondary Backing: ActionBac®
Pile Height: .280"
Total Thickness: .450"
Pattern Repeat: 90" X 180"



Comfort® Rise & Shine™ & Shine™



Sea RS02

Construction: Infinity Tip Shear
Yarn Content: Zeftron Nylon
Dye Method: Solution Dyed
Gauge: 1/10th
Width: 12'
Yarn Weight Tufted: 32 oz.
Stitch Rate: 12 SPI
Primary Backing: Woven Polypropylene
Secondary Backing: ActionBac®
Pile Height: .280"
Total Thickness: .450"
Pattern Repeat: 18" X 27"



Comfort® Rise & Shine™ & Shine™



Sun RS03

Construction: Infinity Tip Shear
Yarn Content: Zeftron Nylon
Dye Method: Solution Dyed
Gauge: 1/10th
Width: 12'
Yarn Weight Tufted: 32 oz.
Stitch Rate: 12 SPI
Primary Backing: Woven Polypropylene
Secondary Backing: ActionBac®
Pile Height: .280"
Total Thickness: .450"
Pattern Repeat: 36" X 36"



Comfort® Rise & Shine™ & Shine™