



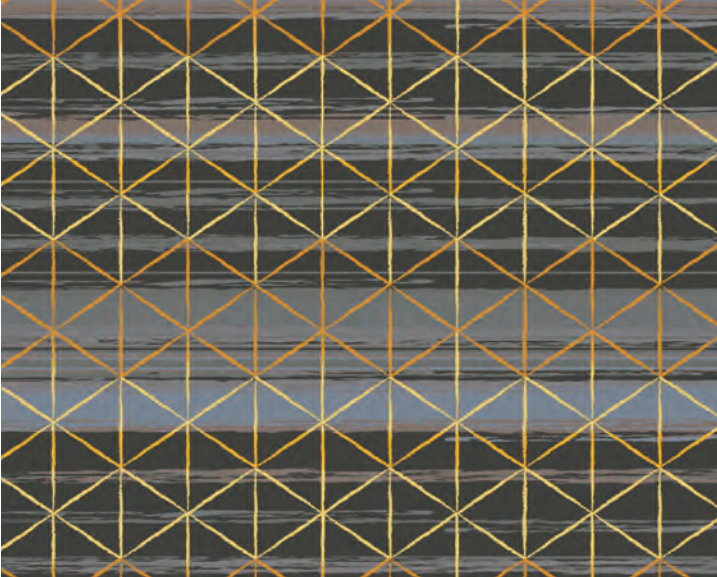
**Holiday Inn**<sup>®</sup>  
Approved H4 Flooring





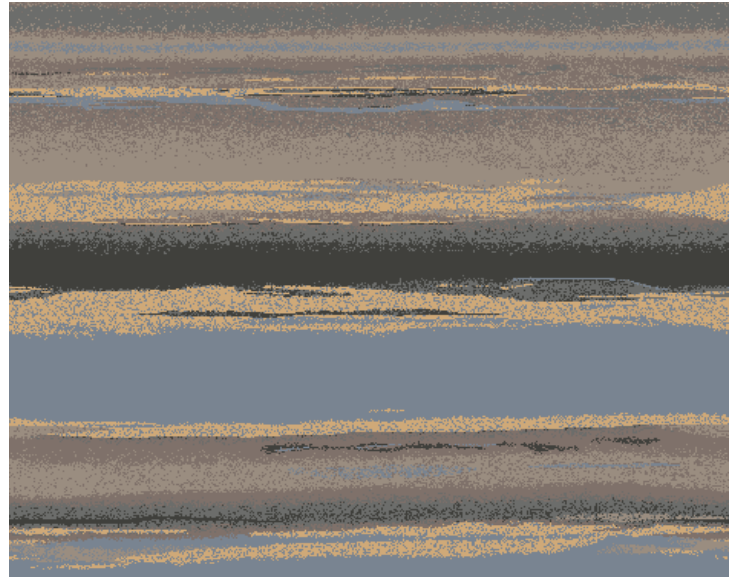
# PUBLIC SPACE

## MEETING ROOM



IHG Spec: HP-CPT13.1.2 - E1680-Q4  
Construction: Dye Injection on base IN230  
Repeat Size: 15' W x 11'9" L Broadloom  
Weight: 36 oz  
Backing: Attached Cushion

## PREFUNCTION



IHG Spec: HP-CPT12.1.2 - E1680-R6  
Construction: Dye Injection on base IN230  
Repeat Size: 3'9" W x 6'9" L Broadloom  
Weight: 36 oz  
Backing: Attached Cushion

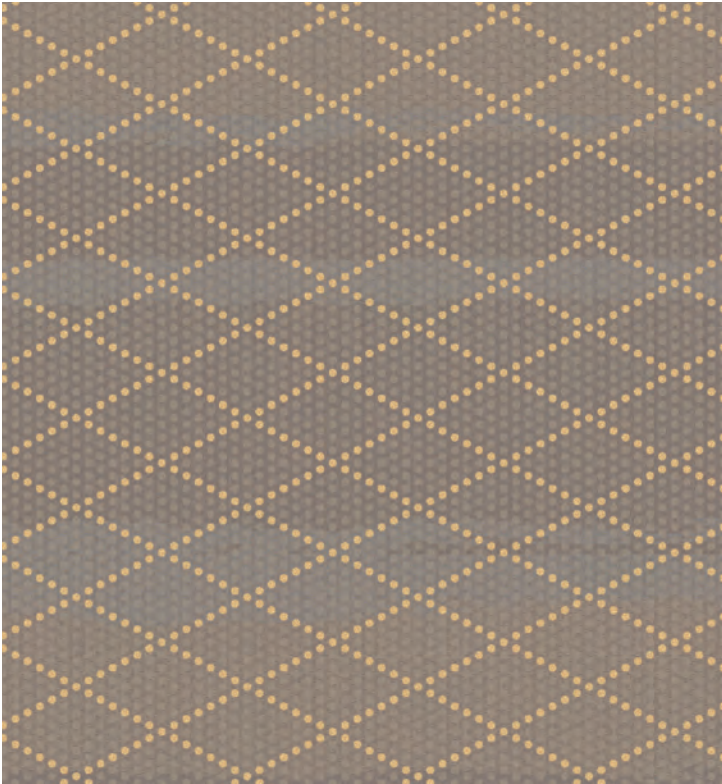






**FAMILY ROOM, LOUNGE  
& LOBBY RUGS**

IHG Spec: HP-CPT11.1.2 - E1680-T9  
Construction: Dye Injection on base IN230  
Repeat Size: 15' W x 23'2.375" L Broad-loom  
Rug Sizes: 15' W x 7'6" L or 15' W x 23'3" L  
Weight: 36 oz  
Backing: Non Slip  
Edge: Includes Binding Tape - 108 Khaki



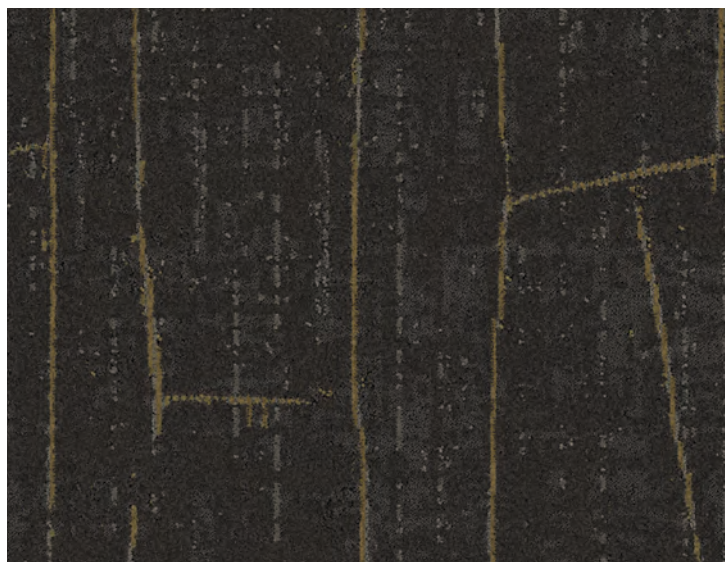


# GUESTROOMS

Light Scheme - Amber

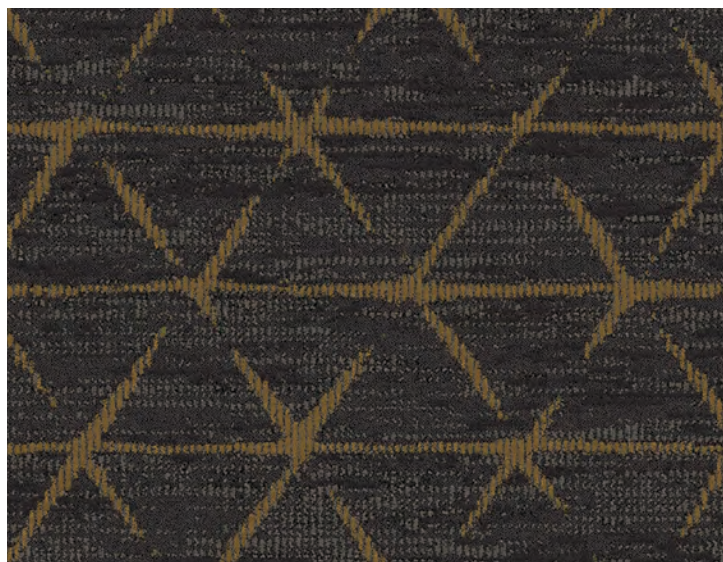


**GUESTROOM BROADLOOM**



IHG Spec: HG-CPT01.1.3 - 1067-73-3  
Construction: Infinity  
Repeat Size: 36" W x 48' L Broadloom  
Weight: 32 oz (12 SPI)  
Backing: Actionbac ®

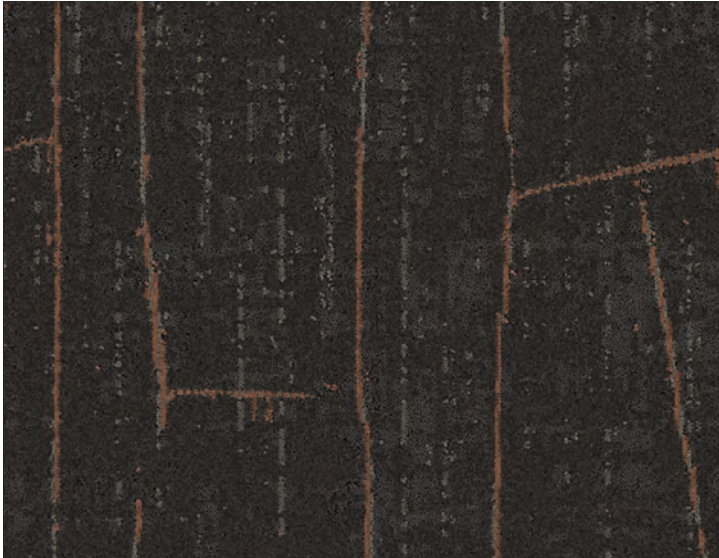
**GUESTROOM BROADLOOM**



IHG Spec: HG-CPT01.2.3 - 1067-3-1  
Construction: Infinity  
Repeat Size: 4' W x 2'11" L Broadloom  
Weight: 32 oz (12 SPI)  
Backing: Actionbac ®

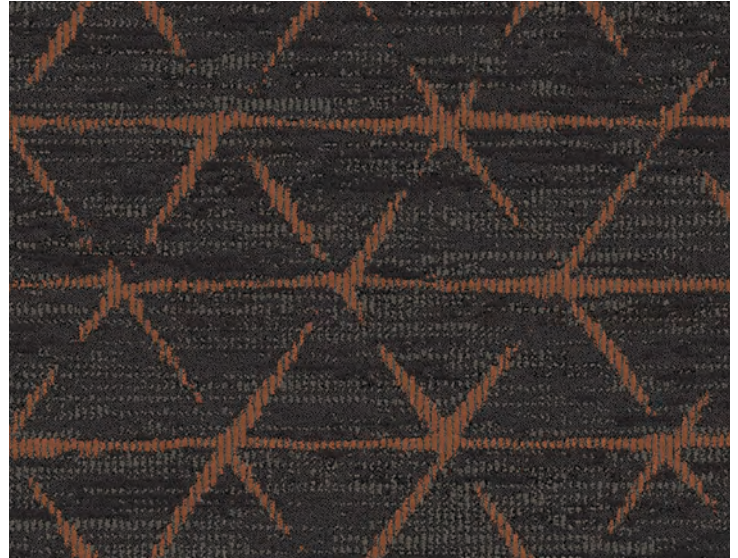


## GUESTROOM BROADLOOM

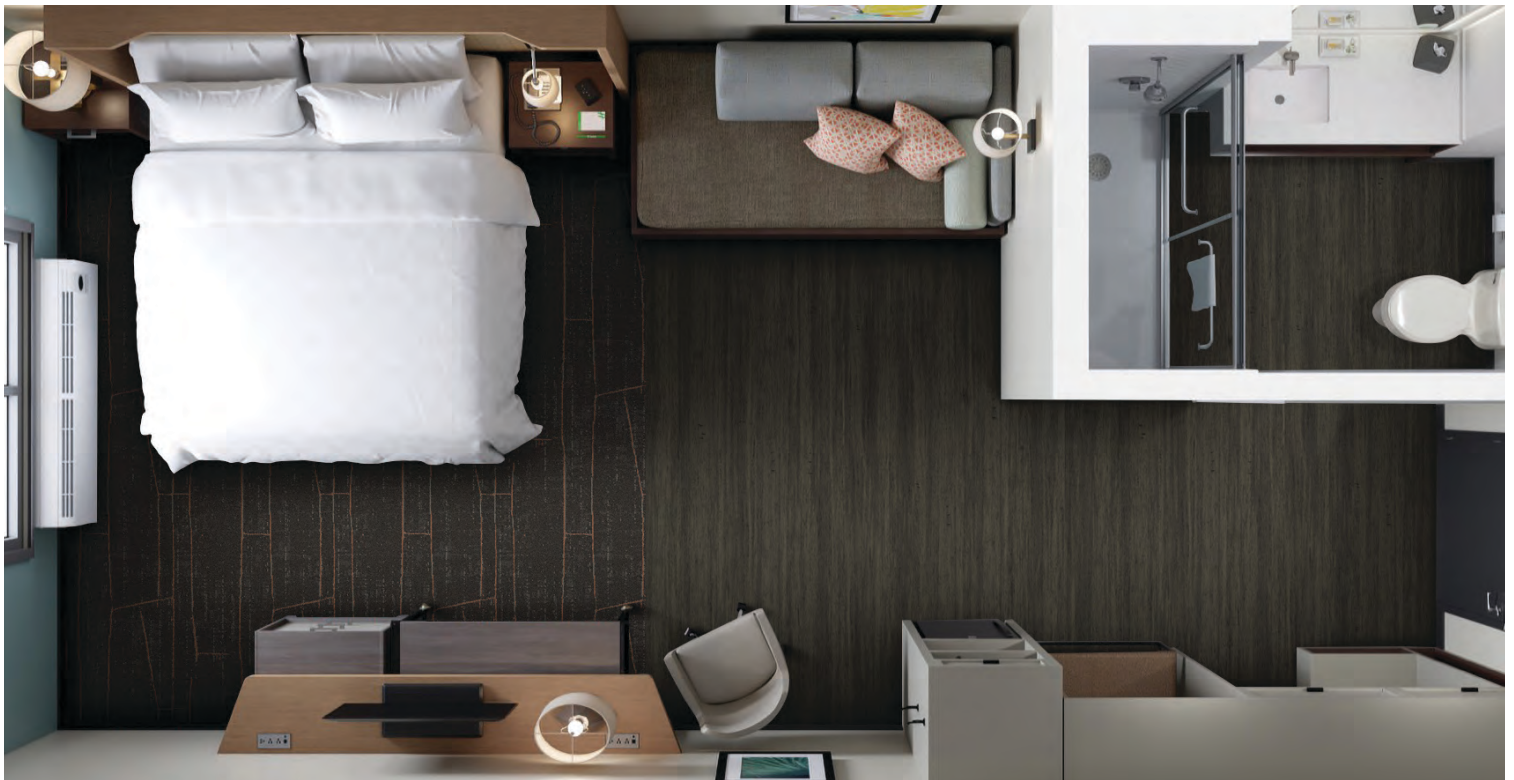


IHG Spec: HG-CPT01.4.3 - 1067-73-4  
Construction: Infinity  
Repeat Size: 36" W x 48" L Broadloom  
Weight: 32 oz (12 SPI)  
Backing: Actionbac ®

## GUESTROOM BROADLOOM



IHG Spec: HG-CPT01.5.3 - 1067-3-3  
Construction: Infinity  
Repeat Size: 4' W x 2'11" L Broadloom  
Weight: 32 oz (12 SPI)  
Backing: Actionbac ®

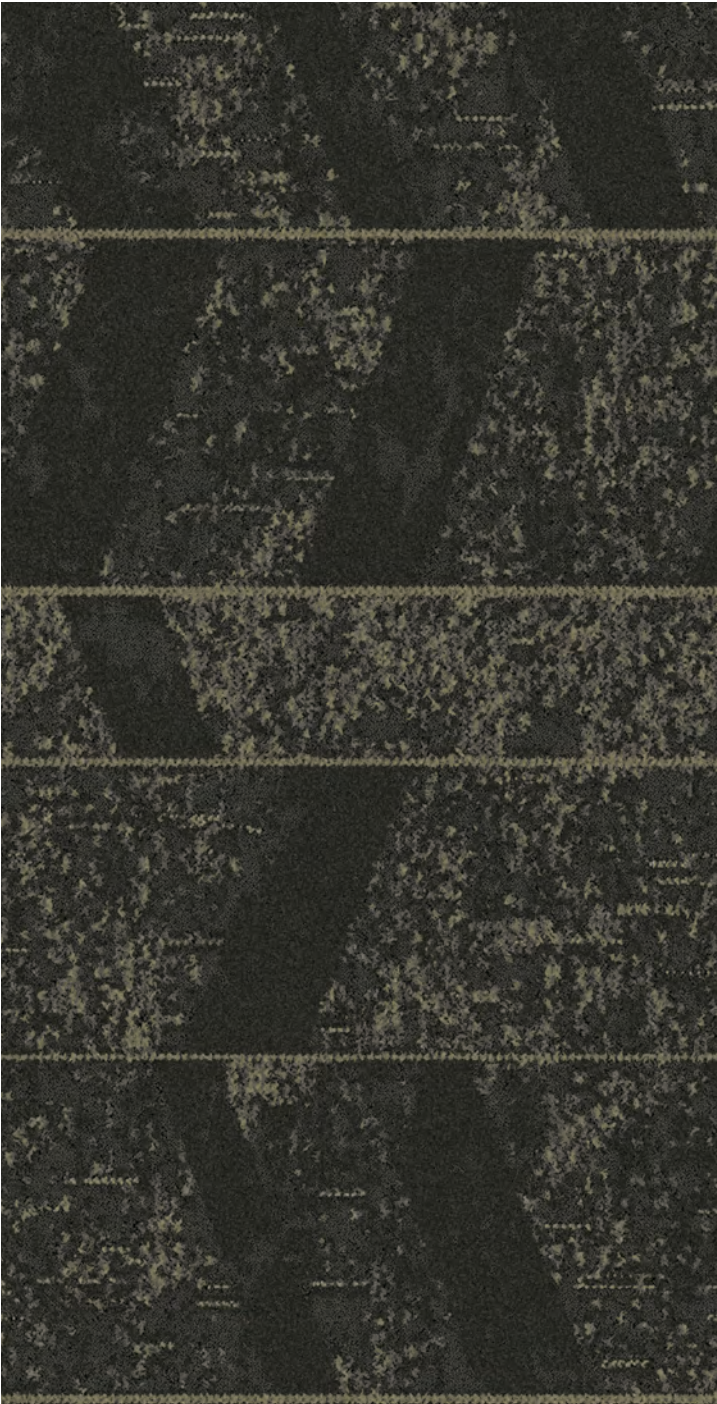




# CORRIDORS

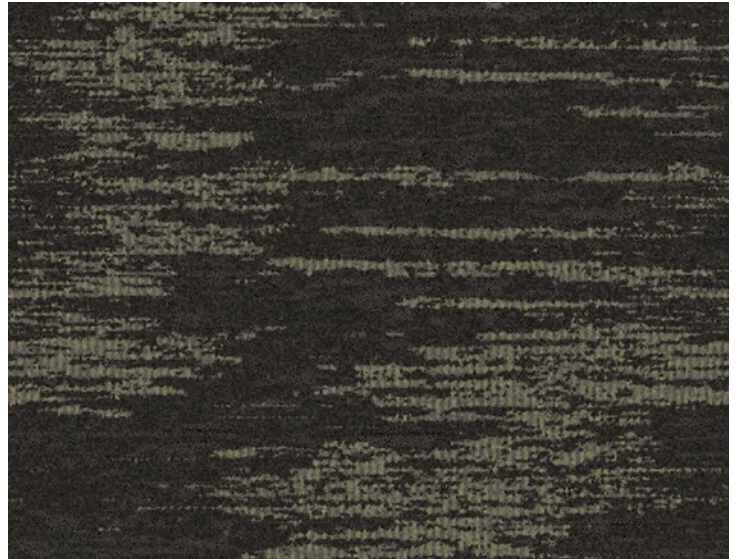
Light | Dark Schemes - Amber | Coral

## CORRIDOR



IHG Spec: HG-CPT03.1.3 - 1067-82-1  
Construction: Infinity  
Repeat Size: 3'6" W x 90" L Broadloom  
Weight: 36 oz (13.5 SPI)  
Backing: Actionbac ®

## CORRIDOR



IHG Spec: HG-CPT03.2.3 - 1067-81-1  
Construction: Infinity  
Repeat Size: 36" W x 45" L Broadloom  
Weight: 36 oz (13.5 SPI)  
Backing: Actionbac ®





**STAIRWELL & BOH**



IHG Spec: HG-CPT04.1.3 - 1067-78-3  
Construction: Infinity  
Repeat Size: 36" W x 36" L Broadloom  
Weight: 36 oz (13.5 SPI)  
Backing: Actionbac ®



**CORRIDOR, STAIRWELL & BOH  
CARPET BASE**

**GUESTROOM CARPET BASE**



IHG Spec: HG-B01.2.3 - 1067-15-1  
Construction: Infinity  
Size: 4" H  
Weight: 30 oz (12 SPI)  
Backing: Actionbac ®



IHG Spec: HG-B03.1.1 - 1067-8-1  
Construction: Infinity  
Size: 6" H  
Weight: 30 oz (12 SPI)  
Backing: Actionbac ®

# VINYL FLOORING



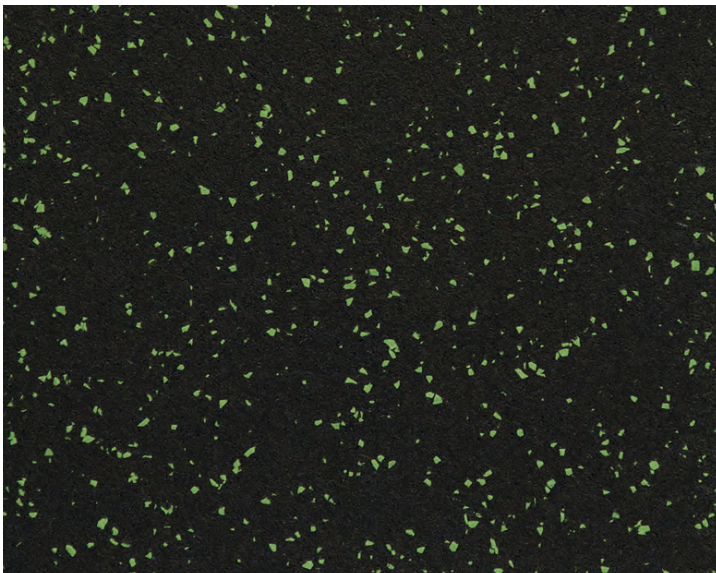
## GUESTROOM ENTRY AND BATH

IHG Spec: HG-VF03.1.1 - B190309-CW-3324  
Color: Gunmetal  
Plank Size: 9"W x 48"L x 2.5mm H  
Wear Layer: 20 mil (.55mm)  
Texture: Wood Grain  
Carton Size: 12 pieces (35.95 sq.ft)





# RUBBER FLOORING



## FITNESS CENTER

IHG Spec:

HP-VF10.1.2

Color:

Rubber Sports Tile 169/20

Size:

Hunter Green

3' W x 3'L x 3/8" H



# SUNDRIES

## ADHESIVES

---

Broadloom: Gold Stix - Premium Multi-Purpose Adhesive  
Installation Method: Direct Glue or Double-Stick  
Size: 4 gallon pail  
Spread Ratio: Direct 32-40 sq yds/pail (1/8" x 18" x 1/16" V-notch)  
Double Stick 20-28 sq yds/pail (1/8" x 18" x 1/16" V-notch)

Carpet Tile: Gold Stix - Stix 2230 - Pressure Sensitive  
Installation Method: Adhesive Carpet  
Tile  
Size: 4 gallon pail  
Spread Ratio: 98-111 sq yds/pail (1/16" x 1/32" x 1/32" U-notch)

Seam Sealer: Stix Seam  
Usage: Broadloom installation  
Size: Case of 12 quarts (Approx. 400 LF per quart)

Vinyl Floor - Stix 2230 - Pressure Sensitive  
Installation Method: Direct Glue  
Size: 4 gallon pail  
Spread Ratio: 98-111 sq yds/pail (1/16" x 1/32" x 1/32" U-notch)

Rubber Floor Tile: MS700 Tile Adhesive  
Installation Method: Direct Glue  
Size: 3 gallon pail  
Spread Ratio: 135-160 sq ft/pail

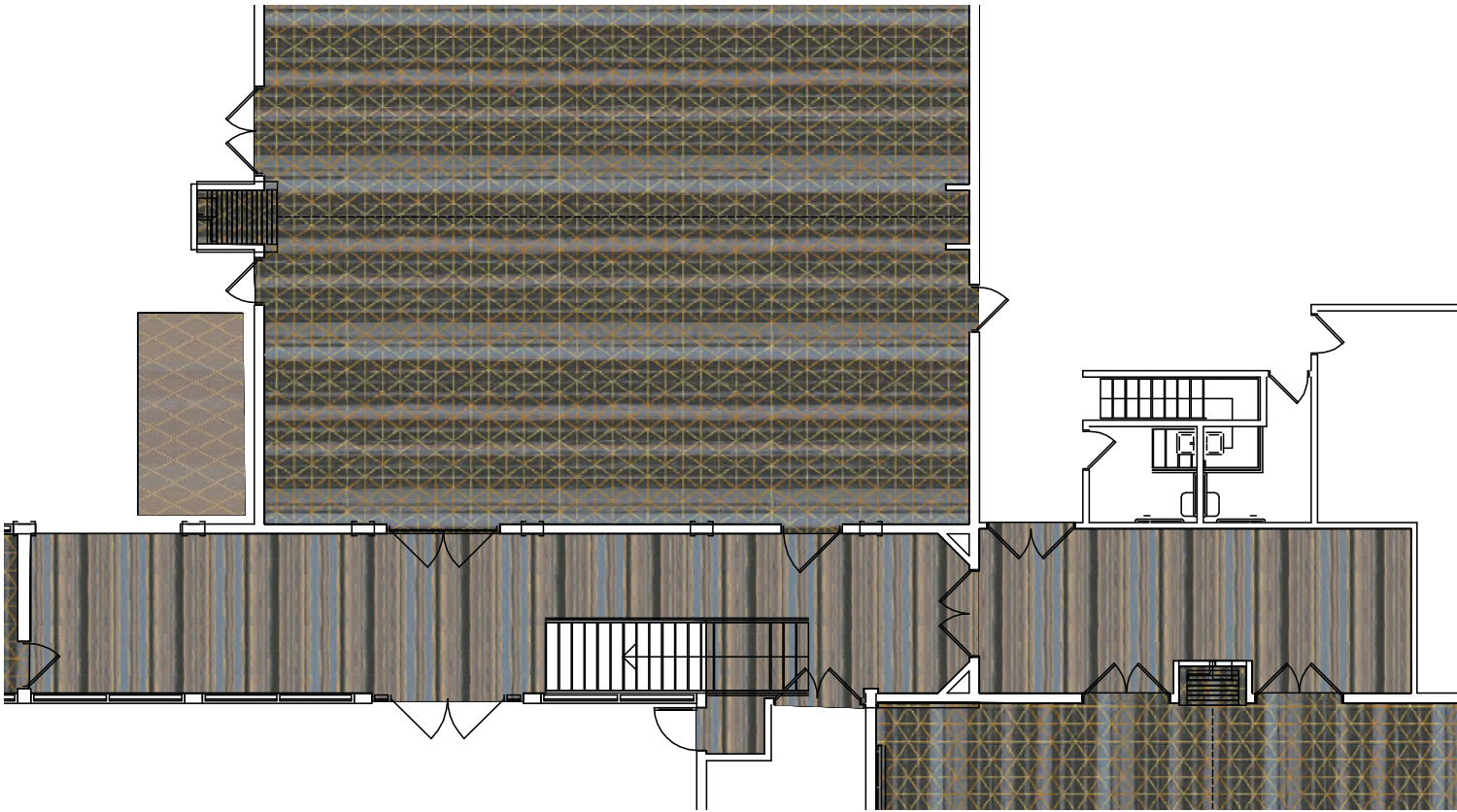
---

## UNDERLAYMENT

Carpet Pad:  
Ounces: 28 oz (NC28) | 32 oz (NC32) | 34 oz (NC34) | 40 oz (NC40)  
Size: 6' W = 40 sq. yds per roll or 12' W = 80 sq. yds per roll  
Double Stick: 34 oz (NCDS) 6' roll only



# FLOODED FLOOR PLAN



## FLOODED KEY

- MEETING: HG-VF03.1.1
- PREFUNCTION: HP-CPT12.1.2
- LOBBY RUG: HP-CPT11.1.2
- GUESTROOM: HG-CPT01.2.2
- GUEST ENTRY/BATH: HG-VF03.1.1
- CORRIDOR: HG-CPT03.2.3





# PUBLIC SPACES

## DYE INJECTION - TECHNICAL SPECIFICATION & PERFORMANCE

---

Yarn Content:	100% Ultron Type 6.6 Nylon
Gauge:	1/10th
Width:	15'
Stitch Rate:	13 SPI
Secondary Backing:	Woven Polypropylene
Flame Resistance:	ASTM E662
Static Control:	Less than 3.5 KV
Flooring Radiant Panel:	Class 1 (ASTM 648)
Smoke Density:	Less than .450 (ASTM E622)
Warranty:	10 Year Wear

## GUESTROOMS & CORRIDOR Amber & Coral Scheme

## INFINITY TIP SHEAR - TECHNICAL SPECIFICATION & PERFORMANCE

---

Yarn Content:	Approved SDN 1/10th
Gauge:	12' (up to 15')
Width:	
Stitch Rate:	12-13.5 SPI
Secondary Backing:	Woven Polypropylene
Flame Resistance:	DOC FF-1-70
Static Control:	Less than 3.5 KV
Flooring Radiant Panel:	Class 1 (ASTM 648)
Smoke Density:	Less than .450 (ASTM E622)
Warranty:	10 Year Wear

## LUXURY VINYL TILE - TECHNICAL SPECIFICATION & PERFORMANCE

---

Finish:	UV Cured Polyurethane
Water Resistant:	100%
Characteristics:	Anti Microbial, Anti Scratch, Anti Slip
Optional Underlayment:	Silent Guard