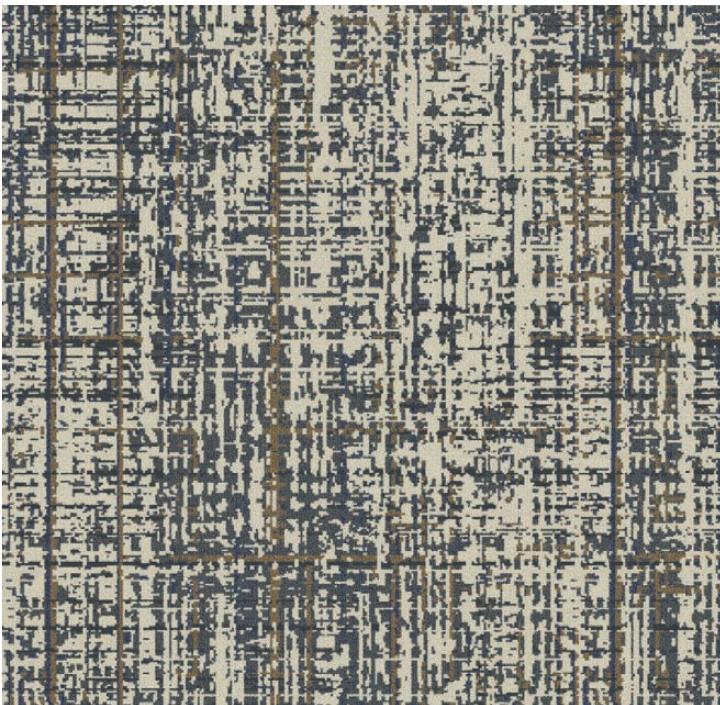




Holiday Inn[®]
Approved H5 Flooring



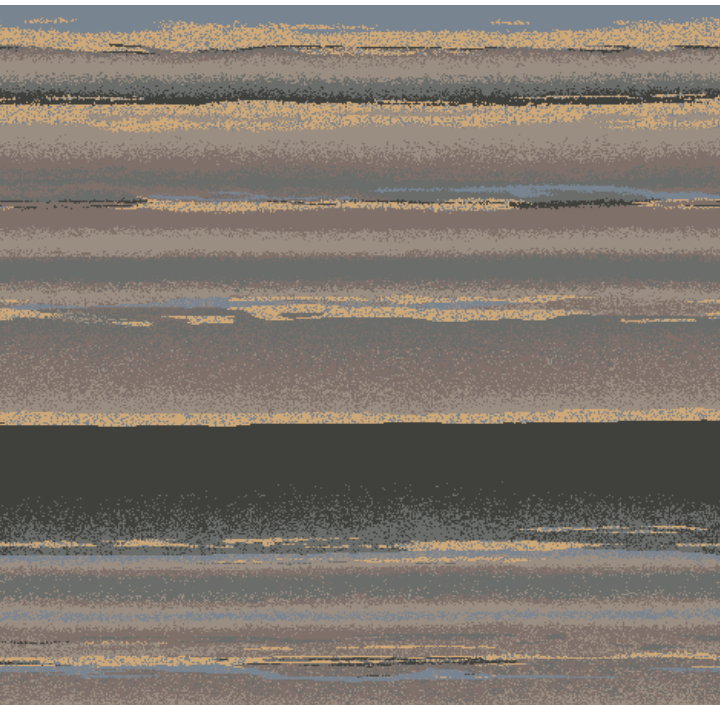
PREFUNCTION, EBAR, & FLEX MEETING



IHG Spec: HIP-CPT01 | 3671-13-1
Construction: Colorpoint
Repeat Size: 3' W x 6'1.6" L Broadloom Half Drop
Width: 12' (up to 15' available as custom)
Weight: 36 oz
Primary Backing: Woven Polypropelene
Secondary Backing: Attached Pad

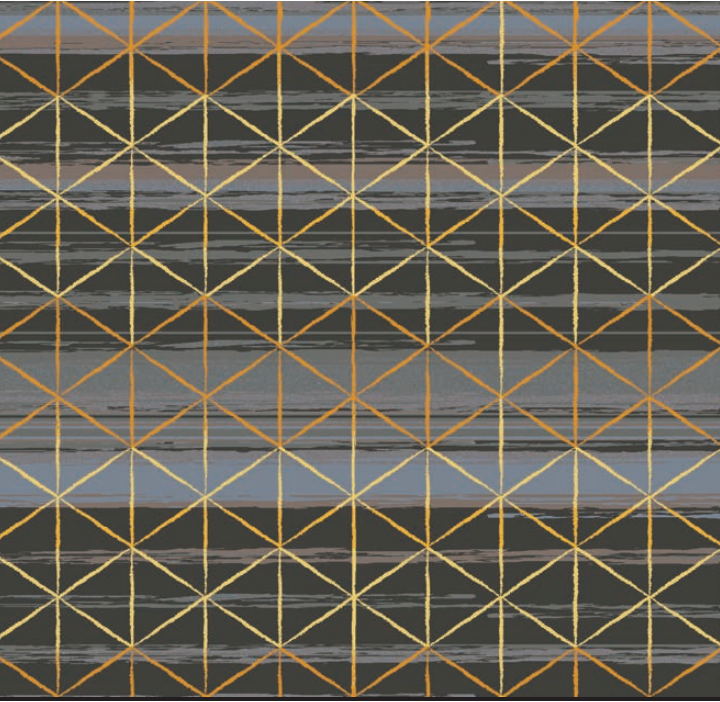
IHG Spec: HIP-CPT03 | E1680-R6
Construction: Dye Injection on base IN230
Repeat Size: 3'9" W x 6'9" L Broadloom
Width: 15'
Weight: 36 oz
Primary Backing: Woven Polypropelene
Secondary Backing: Attached Pad

PREFUNCTION

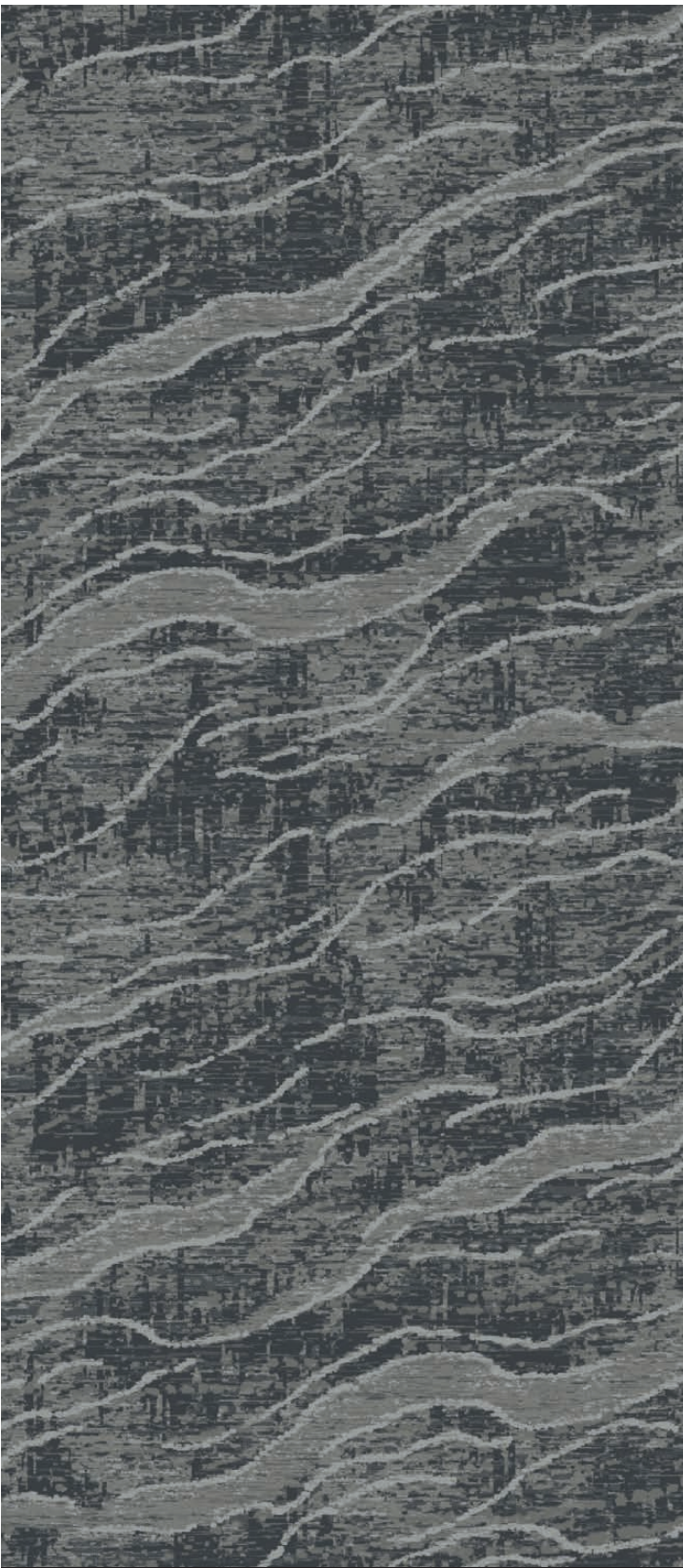


IHG Spec: HIP-CPT04 | E1680-Q4
Construction: Dye Injection on base IN230
Repeat Size: 15' W x 11'9" L Broadloom
Width: 15'
Weight: 36 oz
Primary Backing: Woven Polypropelene
Secondary Backing: Attached Pad

MEETING ROOMS



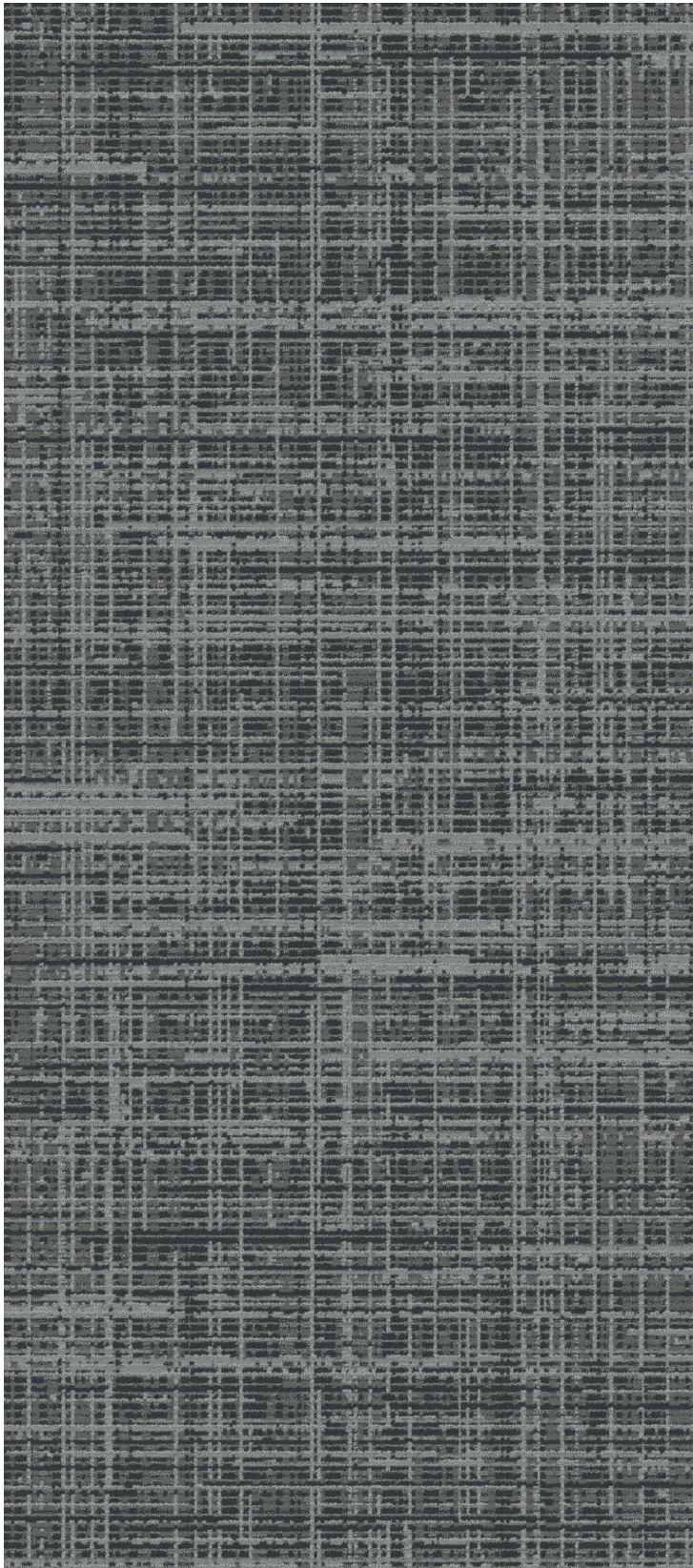
GUEST CORRIDOR



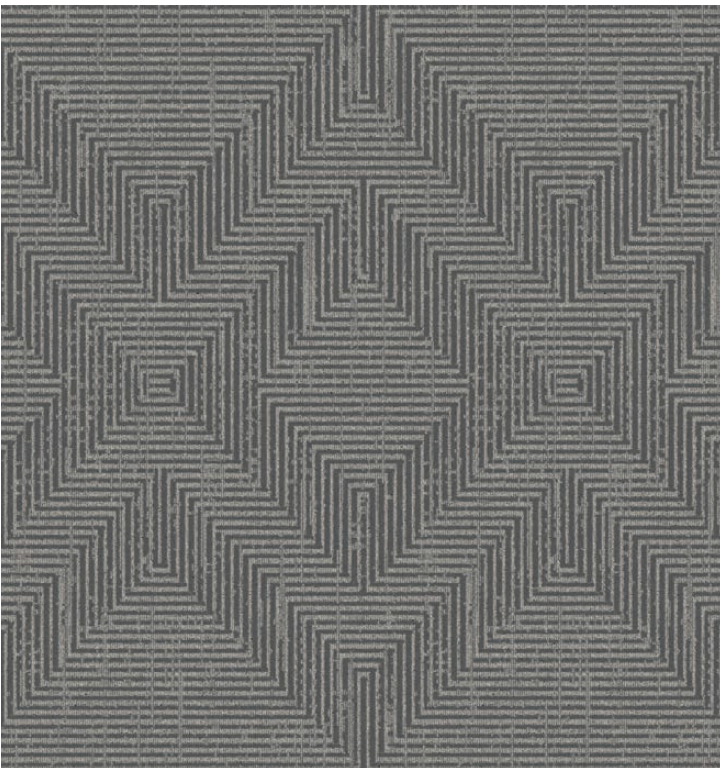
IHG Spec: HIP-CPT02 | 3671-19-1 (CP22416)
 Construction: Colorpoint
 Repeat Size: 6' W x 12' L Broadloom Half Drop
 Width: 12' (15' available as custom)
 Weight: 36 oz
 Primary Backing: Woven Polypropelene
 Secondary Backing: Attached Pad



IHG Spec: HIG-CPT06 | 1067-21-1 (IN32)
 Construction: Infinity Tip Shear
 Repeat Size: 6' W x 5'6" L Broadloom
 Width: 12'
 Weight: 32 oz
 Primary Backing: Woven Polypropelene
 Secondary Backing: Actionbac®

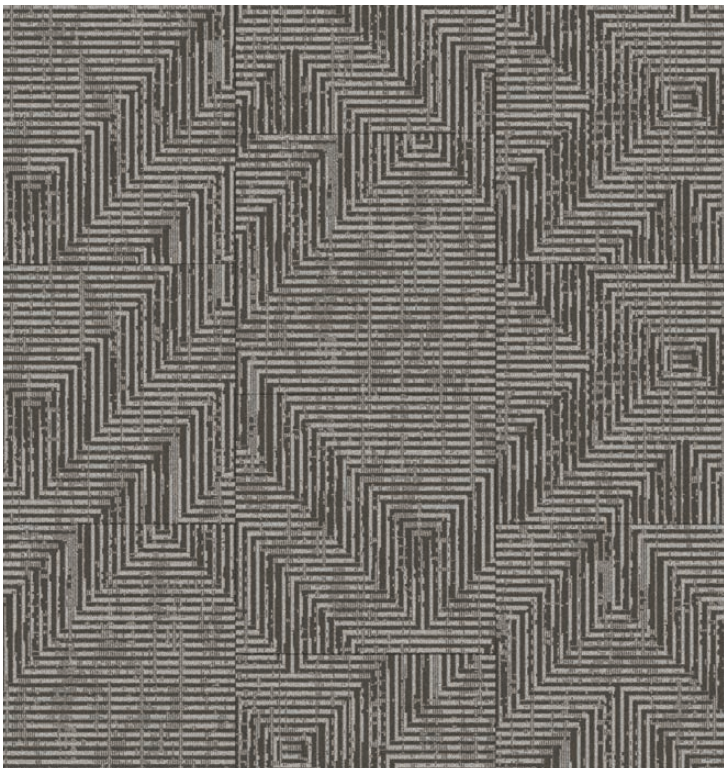


GUESTROOM BROADLOOM



IHG Spec: HIG-CPT01 | 1067-93-2 (IN21270)
 Repeat Size: 3' W x 5'8.33" L Broadloom
 Width: 12ft and 15ft
 Weight: 32 oz
 Primary Backing: Actionbac®

GUESTROOM CARPET TILE



IHG Spec: HIG-CPT02 | 1067-121-4 (IN22081 Shifted)
 Tile Size: 2' W x 2' L Tile (Ashlar)
 Weight: 22 oz
 Primary Backing: Woven Polypropylene
 Carpet Tile Backing: Mod-Flex

GUESTROOM RESILIENT - CLICK



IHG Spec: HIG-LVT01 | Renard - Grey Fox
 Installation Type: Click
 Measurements: 7" x 48"
 Wear Layer Thickness: 20 mil
 Overall Thickness: 5 mm

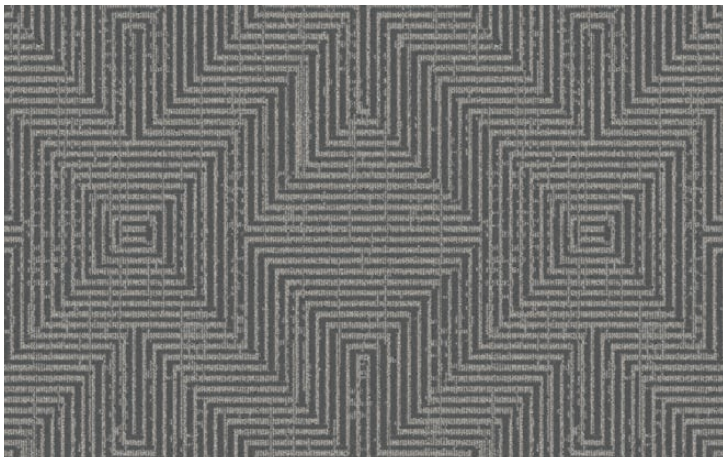
GUESTROOM RESILIENT - GLUE DOWN



IHG Spec: HIG-LVT02 | Renard Grande - Grey Fox
 Installation Type: Glue Down
 Measurements: 9" x 48"
 Wear Layer Thickness: 20 mil
 Overall Thickness: 5 mm



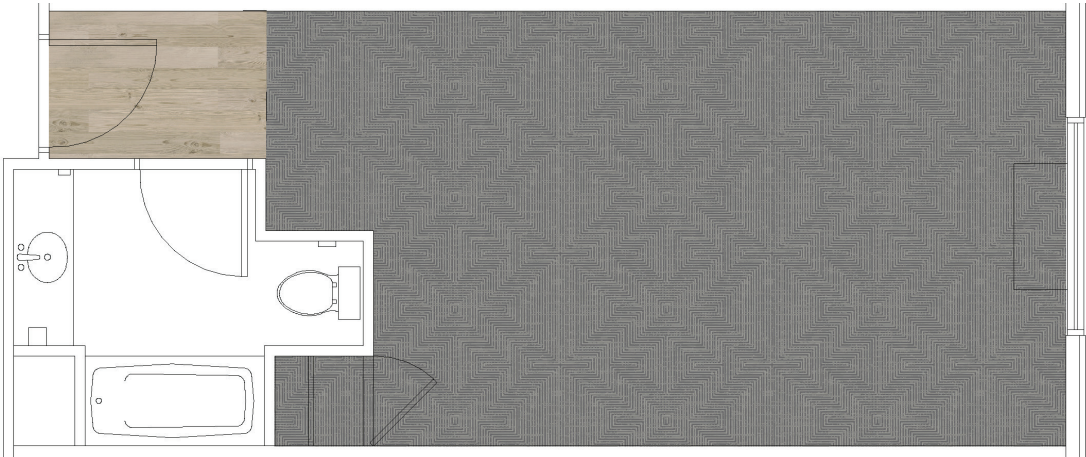
OPTION 1: LVT ENTRY & BROADLOOM



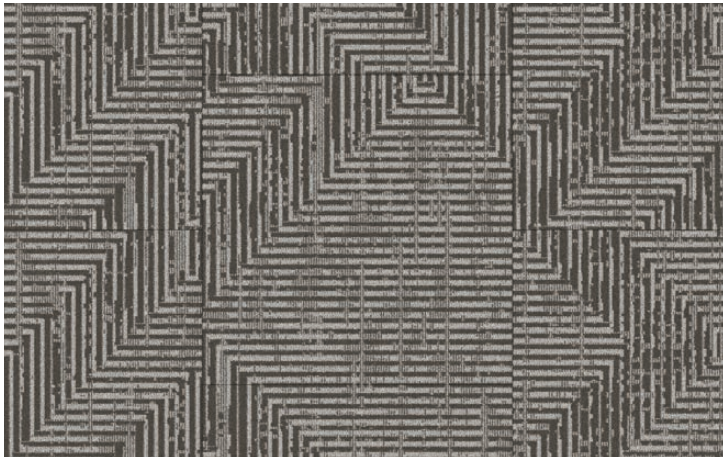
HIG-CPT01 | 1067-93-2 (IN21270)



HIG-LVT01 | Renard - Grey Fox



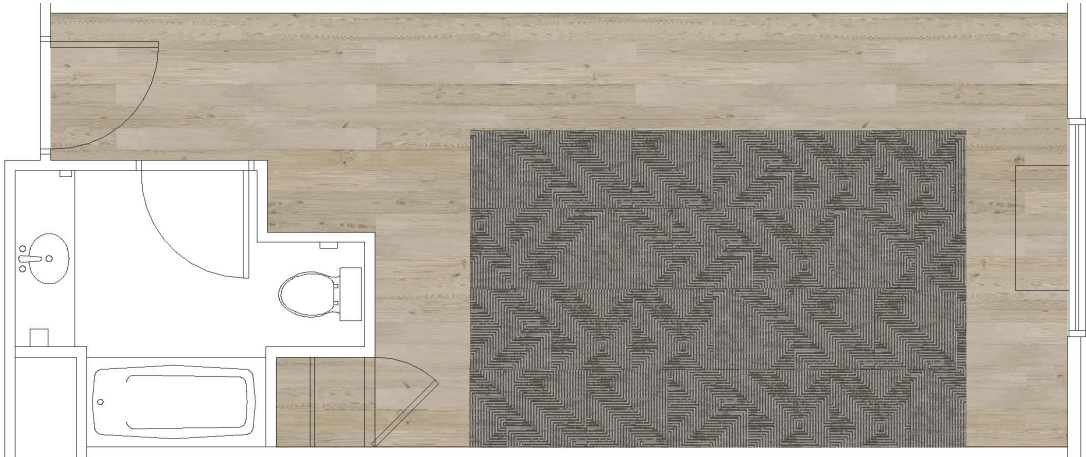
OPTION 2: LVT & CARPET TILE



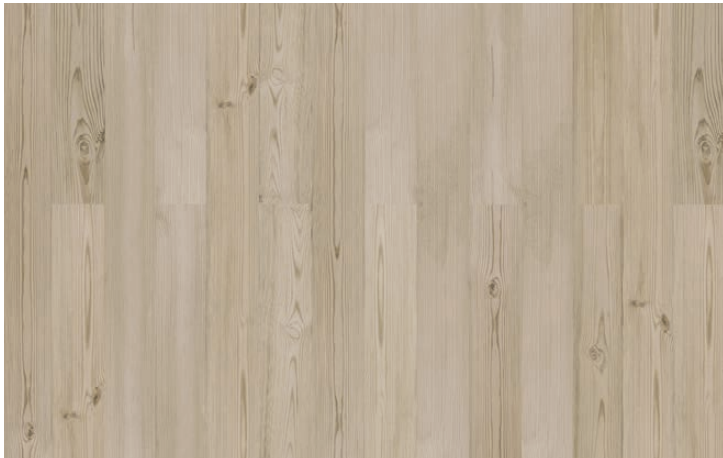
HIG-CPT02 | 1067-121-4 (IN22081 Shifted)



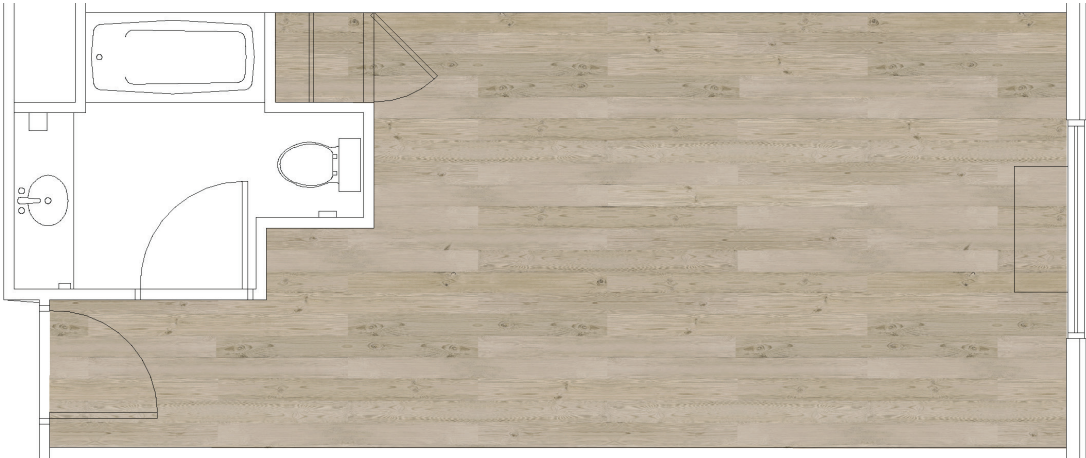
HIG-LVT02 | Renard Grande - Grey Fox



OPTION 3: LVT ONLY



HIG-LVT01 | Renard - Grey Fox

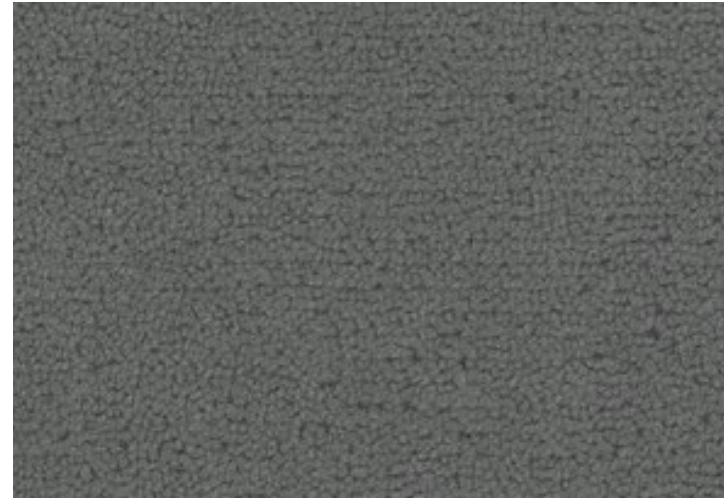


LOBBY & CORRIDOR



IHG Spec: HIG-B01 Lobby | HIG-B02 Corridor
 Size: 6" H x 96" L x 3/8"
 Backing: Vinyl
 Color: Black/Brown

STAIRWELL



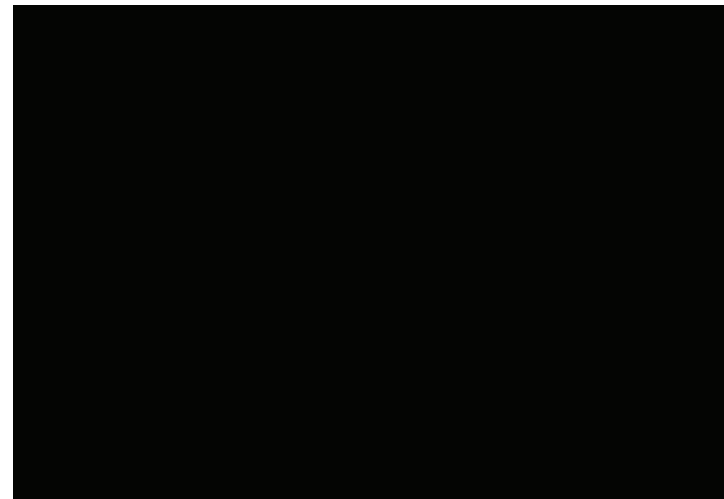
IHG Spec: HIG-B04
 Construction: Infinity
 Size: 4" H or 12" H
 Weight: 30 oz
 Backing: Actionbac®
 Color: 6072

BOH



IHG Spec: HIG-B03
 Size: 4.5" x 1/8th"
 Backing: Vinyl
 Color: Dolphin

FITNESS



IHG Spec: HIG-B07
 Size: 4.5" x 1/8th"
 Backing: Vinyl
 Color: Black

Broadloom -

Adhesive:
 Installation Method:
 Size:
 Spread Ratio:

Gold Stix - Premium Multi-Purpose Adhesive
 Direct Glue
 4 gallon pail
 32-40 sq yds/pail (1/8" x 1/8" x 1/16" V-notch)

Seam Sealer:
 Size:
 Spread Ratio:

Stix Seam
 12 quarts/case
 approx. 400 LF per quart

Carpet Tile & LVT -

Adhesive:
 Installation Method:
 Size:
 Spread Ratio:

Gold Stix - Stix 2230 Pressure Sensitive Adhesive
 Direct Glue
 4 gallon pail
 98-111 sq yds/pail (1/16" x 1/32" x 1/32" U-notch)

Carpet Pad -

Ounces:
 Size:

32 oz (ENC32)
 6' W x 60' L = 40 sq. yds per roll

Vinyl & Rubber Wall Base -

Adhesive:
 Installation Method:
 Size:
 Spread Ratio:

Stix - 4300 Cove Base Adhesive
 Direct Glue
 4 gallon pail
 6" H = 660-720 lin ft/pail (1/8" x 1/8" x 1/8" V-notch)
 4" H = 880-960 lin ft/pail (1/8" x 1/8" x 1/8" V-notch)
 4" H = 55-60 lin ft/tube (3-hole applicator)

PERFORMANCE

Flame Resistance:
 Static Control:
 Flooring Radiant Panel:
 Smoke Density:
 Warranty:

DOC FF-1-70
 Less than 3.5 KV
 Class 1 (ASTM 648)
 Less than .450 (ASTM E622)
 10 Year Limited

