

**CITY SCHEME**



Option 1  
DR2793

Option 2  
DR2794

Option 3  
X03277



\*



Option 1



DR2798 - Set of 3



\*



Option 2



DR2875 - Set of 3



\*



Option 3



DR2804 - Set of 3

**COMFORT INN: GUESTROOMS**

Choice Hotels Tag No.  
X-500A

**SIZE**  
24w x 30h x 1.5d

**Description**

Gallery wrapped canvas, hard-backed. Security hardware installed.

**COMFORT SUITES: GUESTROOMS**

Choice Hotels Tag No.  
X-501A

**SIZE**  
13.25w x 14h  
13.25w x 14h  
36w x 24h

**Description**

Set of 3, gallery wrapped canvas, hard-backed. Security hardware installed.

\* Regional image selected by property.

\*\*\* No changes or cancellations can be made after receipt of purchase order.

\*\*\* Pricing subject to change.

\*\*\* SoCal Free Freight Program available to certain zip codes in the southern California region. See Customer Service for details.

**Notes**

- FOB San Diego.
- Lead time 6 weeks after spec approval
- It is the Procurement Company's responsibility to get necessary approvals from Choice Design before ordering.

**CITY SCHEME**



Option 1  
DR2805



Option 2  
DR2806



Option 3  
DR2807

**GUESTROOM: BATH**  
Choice Hotels Tag No.  
X-502A

**SIZE**  
30w x 30h

**Description**  
Print on paper, no mat. 1-1/4" wide Stainless Frame BW26966. Clear glass. Security hardware installed.



Option 1  
DR2971



Option 2  
DR2972



Option 3  
DR2973

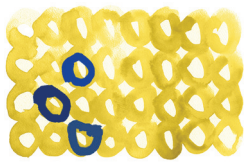
**GUESTROOM: BATH**  
Choice Hotels Tag No.  
X-502A - RENOVATION PROPERTIES ONLY

**SIZE**  
20w x 20h

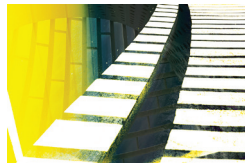
**Description**  
Print on paper, no mat. 1-1/4" wide Bronze Frame BW26-1217. Clear glass. Security hardware installed.



Option 1 - X03303\*



Option 2 - DR2820



Option 3 - DM10582

\* Image comes with blue letters representing US State abbreviations. Order the state your where property is located. For example, Alabama is AL-X03303

**COMMUNAL TABLE ART**  
Choice Hotels Tag No.  
LBY-501A

**SIZE**  
50w x 35h

**Description**  
Print on paper, no mat. 1-1/4" wide Bronze Frame BW26-1217. Clear plexiglas. Security hardware installed.



2 Pieces Per Floor

**PUBLIC SPACE: CORRIDOR ART**  
Choice Hotels Tag No.  
LBY-503

**SIZE**  
30w x 42h

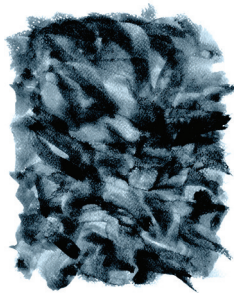
**Description**  
Set of 2, print on paper, no mat. 1-1/4" wide Bronze Frame BW26-1217. Clear plexiglas. Security hardware installed.

\*\*\* No changes or cancellations can be made after receipt of purchase order.  
\*\*\* Pricing subject to change.  
\*\*\* SoCal Free Freight Program available to certain zip codes in the southern California region. See Customer Service for details.

**Notes**

- FOB San Diego.
- Lead time 6 weeks after spec approval
- It is the Procurement Company's responsibility to get necessary approvals from Choice Design before ordering.

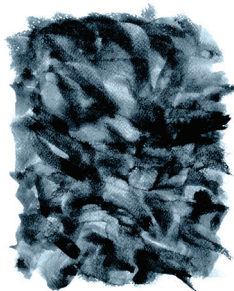
**CITY SCHEME**



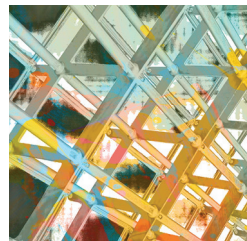
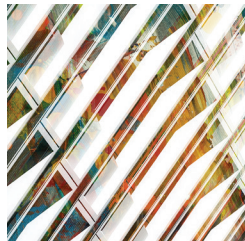
Option 1 DR2882 - Set of 2



Option 2 DR2883 - Set of 2



Option 3 DR2884 - Set of 2



Option 1  
X03279

Option 2  
X03280

Option 3  
X03281

**PUBLIC SPACE: BREAKFAST ROOM**

Choice Hotels Tag No.  
BR-500A

**SIZE**  
40w x 48h

**Description**

Set of 2, print on paper, no mat. 1-1/4" wide Bronze Frame BW26-1217. Clear plexiglas. Security hardware installed.

**PUBLIC SPACE: FLEX ROOM**

Choice Hotels Tag No.  
FMR-500A

**SIZE**  
48w x 45h

**Description**

Print on paper, no mat. 1-1/4" wide Bronze Frame BW26-1217. Clear plexiglas. Security hardware installed.

\*\*\* No changes or cancellations can be made after receipt of purchase order.  
\*\*\* Pricing subject to change.  
\*\*\* SoCal Free Freight Program available to certain zip codes in the southern California region. See Customer Service for details.

**Notes**

- FOB San Diego.
- Lead time 6 weeks after spec approval
- It is the Procurement Company's responsibility to get necessary approvals from Choice Design before ordering.



**CITY SCHEME**

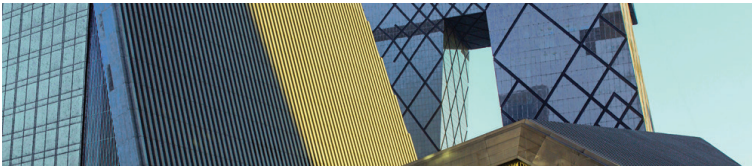
---



34w x 10h



39w x 12h

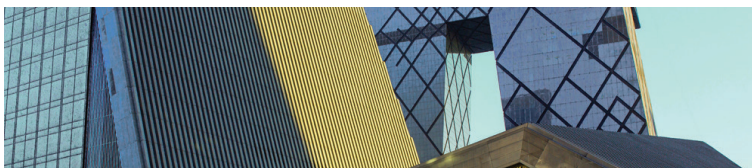
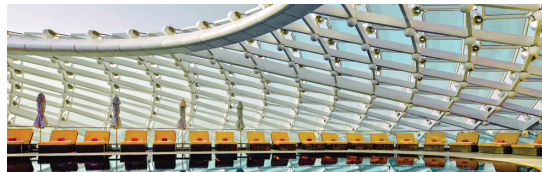


56w x 12h

---



3 Pieces of Regional Artwork



**PUBLIC SPACE:  
GRID WALL REGIONAL ARTWORK**

Choice Hotels Tag No.	Substrate
BR-503	Aluminum Masonite

**Description**

A set of three prints. Choice of substrate; scratch resistant aluminum or .25" white Masonite. Aluminum to have rounded corners. No security hardware. Artwork to be installed by millwork staff using liquid nails.

---

**PUBLIC SPACE: RENOVATION PROPERTIES /  
PROPERTIES WITHOUT SLATTED WALL INSTALLED**

Choice Hotels Tag No.	Substrate
BR-503	Aluminum Masonite

**Description**

Three pieces of regional artwork to be included in the lobby artwork package. Choice of substrate; scratch resistant aluminum or .25" white Masonite. Aluminum to have rounded corners. Franchisee to work with \_\_\_\_\_ on the sizing and location of these pieces. Pricing dependent on sizing. Security hardware installed.

---

\*\*\* No changes or cancellations can be made after receipt of purchase order.  
\*\*\* Pricing subject to change.  
\*\*\* SoCal Free Freight Program available to certain zip codes in the southern California region. See Customer Service for details.

**Notes**

- FOB San Diego.
- Lead time 6 weeks after spec approval
- It is the Procurement Company's responsibility to get necessary approvals from Choice Design before ordering.

**CITY SCHEME**



Option 1 - DM10585



Option 2 - DM10586



Option 3 - DM10587



**PUBLIC SPACE: FRONT DESK  
SCRATCH RESISTANT ALUMINUM**

<b>Choice Hotels Tag No.</b>	<b>SIZE</b>
LBY-500	60w x 28h

**Description**

Print on scratch resistant aluminum (high gloss). Aluminum to have rounded corners. Contact INTERIA for regional specific imagery.

**PUBLIC SPACE: FRONT DESK  
WHITE MASONITE**

<b>Choice Hotels Tag No.</b>	<b>SIZE</b>
LBY-500	60w x 28h

**Description**

Print on .25" white masonite. regional specific imagery.

\* If installing front desk artwork directly into wooden panel with liquid nails, order option without installation hardware. If installing to an existing wall, order option with installation hardware.

**Choice Hotels Tag No.**

X-503

**SIZE**

TBD

30w x 66h

**Description**

**Guestroom Mirror**

Full Length Mirror. Metal frame w/ rounded corners and champagne finish. Mirror – 3mm / OSHA 1 vinyl backed. Frame Width - 2cm. Hardware installed.

\*\*\* No changes or cancellations can be made after receipt of purchase order.  
 \*\*\* Pricing subject to change.  
 \*\*\* SoCal Free Freight Program available to certain zip codes in the southern California region. See Customer Service for details.

**Notes**

- FOB San Diego.
- Lead time 6 weeks after spec approval
- It is the Procurement Company's responsibility to get necessary approvals from Choice Design before ordering.