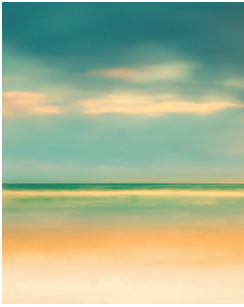
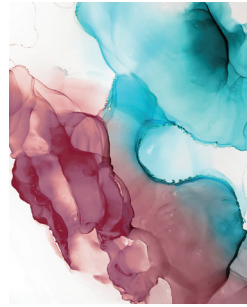


SUN SCHEME



Option 1
DR2837



Option 2
DR2838



Option 3
DR2839



*



Option 1

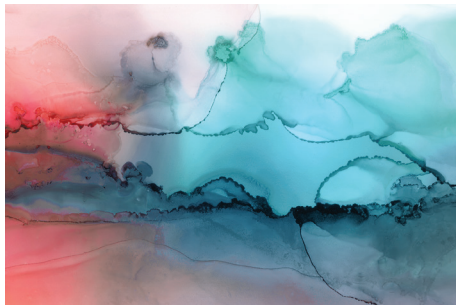


DR2843 - Set of 3

*



Option 2

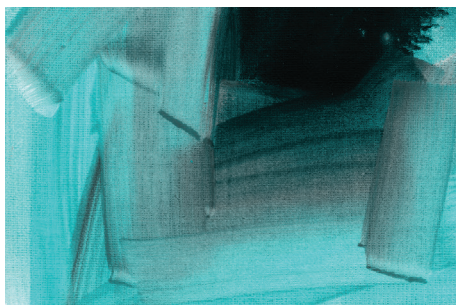


DR2847 - Set of 3

*



Option 3



DR2848 - Set of 3

COMFORT INN: GUESTROOMS

Choice Hotels Tag No.
X-500C

SIZE
24w x 30h x 1.5d

Description

Gallery wrapped canvas, hard-backed, security hardware installed.

COMFORT SUITES: GUESTROOMS

Choice Hotels Tag No.
X-501C

SIZE
13.25w x 14h
13.25w x 14h
36w x 24h

Description

Set of 3, gallery wrapped canvas, hard-backed.
Security hardware installed.

* Regional image selected by property.

*** No changes or cancellations can be made after receipt of purchase order.

*** Pricing subject to change.

*** SoCal Free Freight Program available to certain zip codes in the southern California region.
See Customer Service for details.

Notes

- FOB San Diego.
- Lead time 6 weeks after spec approval
- It is the Procurement Company's responsibility to get necessary approvals from Choice Design before ordering.

SUN SCHEME



Option 1
DR2811



Option 2
DR2812



Option 3
DR2813

GUESTROOM: BATH
Choice Hotels Tag No.
X-502C

SIZE
30w x 30h

Description
Print on paper, no mat. 1-1/4" wide Stainless Frame BW26966. Clear glass. Security hardware installed.



Option 1
DR2997



Option 2
DR2978



Option 3
DR2979

GUESTROOM: BATH
Choice Hotels Tag No.
X-502C - RENOVATION PROPERTIES ONLY

SIZE
20w x 20h

Description
Print on paper, no mat. 1-1/4" wide Bronze Frame BW26-1217. Clear glass. Security hardware installed.



Option 1 - X03305*



Option 2 - DR2864



Option 3 - X03286

* Image comes with red letters representing US State abbreviations. Order the state your where property is located. For example, Alabama is AL-X03305

COMMUNAL TABLE ART
Choice Hotels Tag No.
LBY-501C

SIZE
50w x 35h, ea.

Description
Print on paper, no mat. 1-1/4" wide Bronze Frame BW26-1217. Clear plexiglas. Security hardware installed.



2 Pieces Per Floor

PUBLIC SPACE: CORRIDOR ART
Choice Hotels Tag No.
LBY-503

SIZE
30w x 42h, ea.

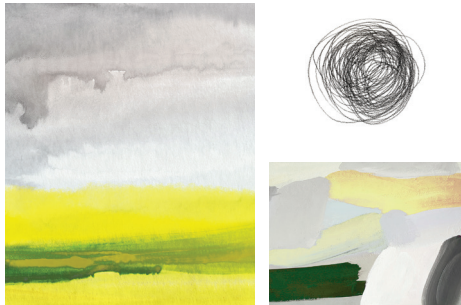
Description
Set of 2, print on paper, no mat. 1-1/4" wide Bronze Frame BW26-1217. Clear plexiglas. Security hardware installed. Contact _____ for regional image option and with floor count.

*** No changes or cancellations can be made after receipt of purchase order.
*** Pricing subject to change.
*** SoCal Free Freight Program available to certain zip codes in the southern California region. See Customer Service for details.

Notes

- FOB San Diego.
- Lead time 6 weeks after spec approval
- It is the Procurement Company's responsibility to get necessary approvals from Choice Design before ordering.

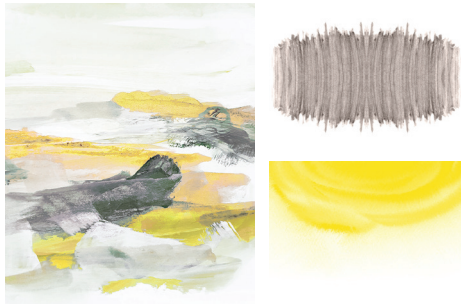
SUN SCHEME



Option 1 DR2855 - Set of 3



Option 2 DR2859 - Set of 3



Option 3 DR2863 - Set of 3

PUBLIC SPACE: BREAKFAST ROOM

Choice Hotels Tag No.
BR-500C

SIZE
40w x 48h
40w x 30h
40w x 30h

Description

Set of 3, print on paper, no mat. 1-1/4" wide
Bronze Frame BW26-1217. Clear plexiglas. Security
hardware installed.

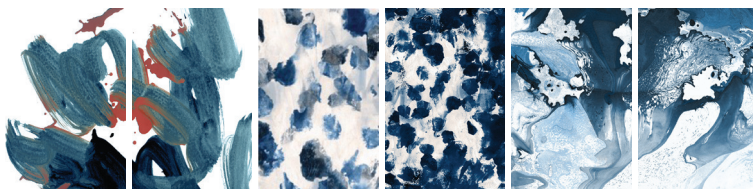
PUBLIC SPACE: FLEX ROOM

Choice Hotels Tag No.
FMR-500C

SIZE
32w x 48h

Description

Set of 2, print on paper, no mat. 1-1/4" wide
Bronze Frame BW26-1217, clear plexiglas. Security
hardware installed.



Option 1
DR2867 - Set of 2

Option 2
DR2870 - Set of 2

Option 3
DR2873 - Set of 2

*** No changes or cancellations can be made after receipt of purchase order.
*** Pricing subject to change.
*** SoCal Free Freight Program available to certain zip codes in the southern California region.
See Customer Service for details.

Notes

- FOB San Diego.
- Lead time 6 weeks after spec approval
- It is the Procurement Company's responsibility to get necessary approvals from Choice Design before ordering.

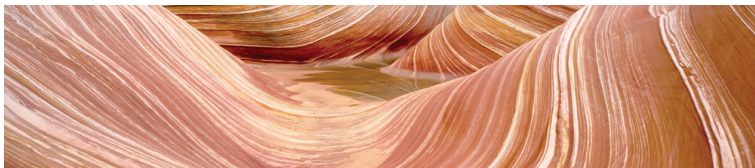
SUN SCHEME



34w x 10h



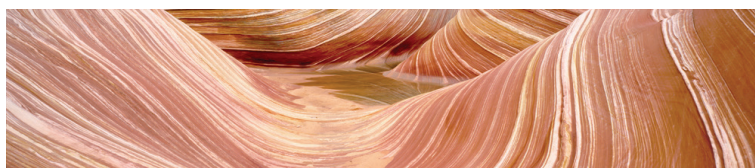
39w x 12h



56w x 12h



3 Pieces of Regional Artwork



**PUBLIC SPACE:
GRID WALL REGIONAL ARTWORK**

Choice Hotels Tag No.
BR-503

Substrate Price \$ 399.95
Aluminum Price \$ 1199.95
Masonite

Description

A set of three prints. Choice of substrate; scratch resistant aluminum or .25" white Masonite. Aluminum to have rounded corners. No security hardware. Artwork to be installed by millwork staff using liquid nails. Contact _____ for regional image option.

Set of 3

**PUBLIC SPACE: RENOVATION PROPERTIES /
PROPERTIES WITHOUT SLATTED WALL INSTALLED**

Choice Hotels Tag No.
BR-503

Substrate
Aluminum
Masonite

Description

Three pieces of regional artwork to be included in the lobby artwork package. Choice of substrate; scratch resistant aluminum or .25" white Masonite. Aluminum to have rounded corners. Franchisee to work with _____ on the sizing and location of these pieces. Pricing dependent on sizing. Security hardware installed.

*** No changes or cancellations can be made after receipt of purchase order.
*** Pricing subject to change.
*** SoCal Free Freight Program available to certain zip codes in the southern California region. See Customer Service for details.

Notes

- FOB San Diego.
- Lead time 6 weeks after spec approval
- It is the Procurement Company's responsibility to get necessary approvals from Choice Design before ordering.

SUN SCHEME



Option 1 - DM10585



Option 2 - DM10586



Option 3 - DM10587



**PUBLIC SPACE: FRONT DESK
SCRATCH RESISTANT ALUMINUM**

Choice Hotels Tag No.	SIZE
LBY-500	60w x 28h

Description

Print on scratch resistant aluminum (high gloss). Aluminum to have rounded corners. Contact INTERIA for regional specific imagery.

**PUBLIC SPACE: FRONT DESK
WHITE MASONITE**

Choice Hotels Tag No.	SIZE	PRICE
LBY-500	60w x 28h	

Description

Print on .25" white masonite. Contact _____ for regional specific imagery.

* If installing front desk artwork directly into wooden panel with liquid nails, order option without installation hardware. If installing to an existing wall, order option with installation hardware.

Choice Hotels Tag No.

X-503	SIZE
TBD	30w x 66h

Description

Guestroom Mirror

Full Length Mirror. Metal frame w/ rounded corners and champagne finish. Mirror – 3mm / OSHA 1 vinyl backed. Frame Width - 2cm. Hardware installed. Contact INTERIA for more information.

*** No changes or cancellations can be made after receipt of purchase order.
 *** Pricing subject to change.
 *** SoCal Free Freight Program available to certain zip codes in the southern California region. See Customer Service for details.

Notes

- FOB San Diego.
- Lead time 6 weeks after spec approval
- It is the Procurement Company's responsibility to get necessary approvals from Choice Design before ordering.